




PRODUCT TYPE	DIMENSIONS(MM)	UNITS PER SQUARE METRE	WEIGHT * PER SQUARE METRE
Paver & Tile Square 	400x400x12	6.25	33 kg
	400x400x30	6.25	66 kg
	500x500x20	4	44 kg
	1000x500x20	2	44 kg
Paver and tile Rectangular 	600x300x20	5.56	44 kg
Coping with Bullnose 	600x250x30	1.66 per lineal metre	9.9 kg per unit
	600x350x30	1.66 per lineal metre	13.86 kg per unit
	500x500x30	2 per lineal metre	13.86 kg per unit

Other sizes are from 100x100 to 1000x1000, thickness varies from 10mm to 50mm thick. Available by order only.
 *Weight approximate only. Actual weight subject to colours of the sandstone in dry condition

Please Note: SAI SANDSTONE suggests for best protection of the stone, all pavers and coping used around salt water pool need to be sealed with anti salt attack sealer.

SURFACE FINISH



Honed



Sandblast

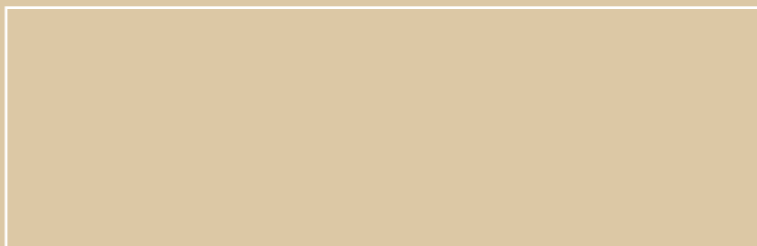


Pre Sealed

National supplier of unique natural sandstone products & Master Constructional Stonemason. Please contact us or log on www.SaiSandstone.com.au to find more information about our other sandstone products or arrange an inspection, request a sample, or find out your nearest SAI retailer.

1300 855 851

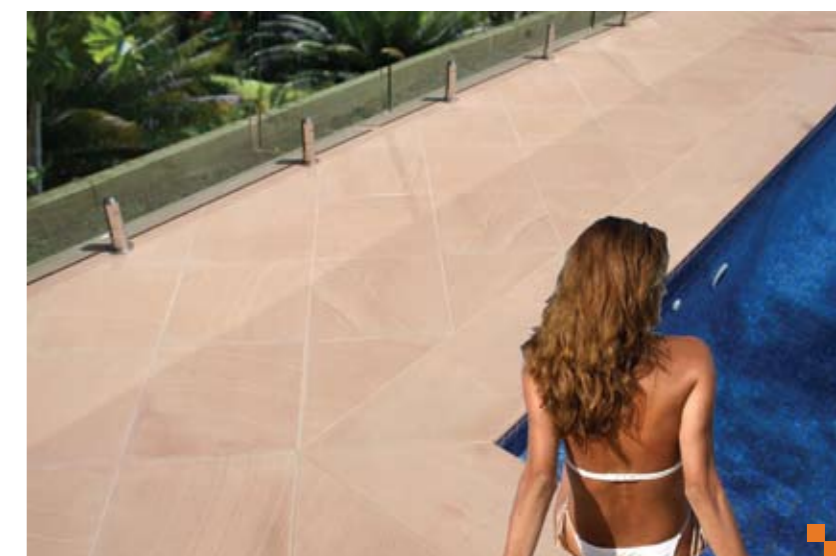
YOUR NEAREST SAI RETAILER.



Pavers

Pool Coping

Tiles



*Natural, Prestige,
Endless Style*



SAI SANDSTONE is one of the finest sandstones in the world.
 Beautifully natural, fashion that lasts.
 Comfortable Feeling with top anti slip rating.
 Ideally suited for use in Australian homes, garden and poolside.
 Generations of High workmanship ensures high quality finishes.
 Tested in compliance to Aust standards.



Standard Colours

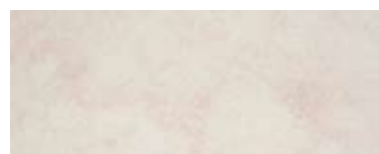
Quality Natural Sandstone from the Far East



Grampian Sand



Coffee Ranges



Snow White

COLOURS SUPPLIED BY ORDER



Pink Lady



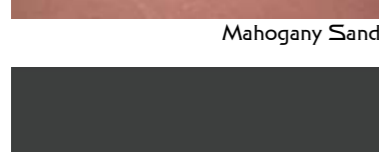
Brown Silk



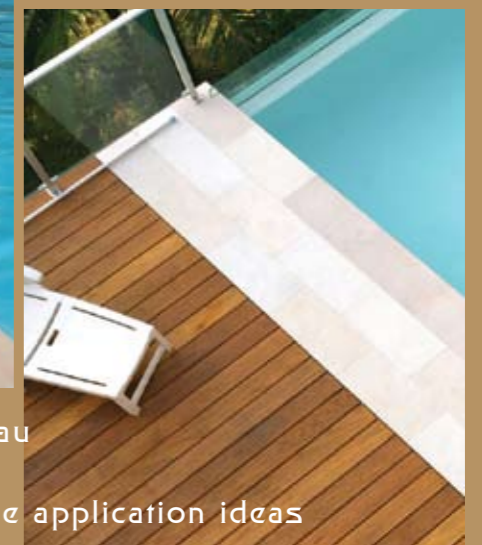
Purple Sand



Mahogany Sand



Blue Stone



Discover on www.saisandstone.com.au

for more project design and sandstone application ideas

